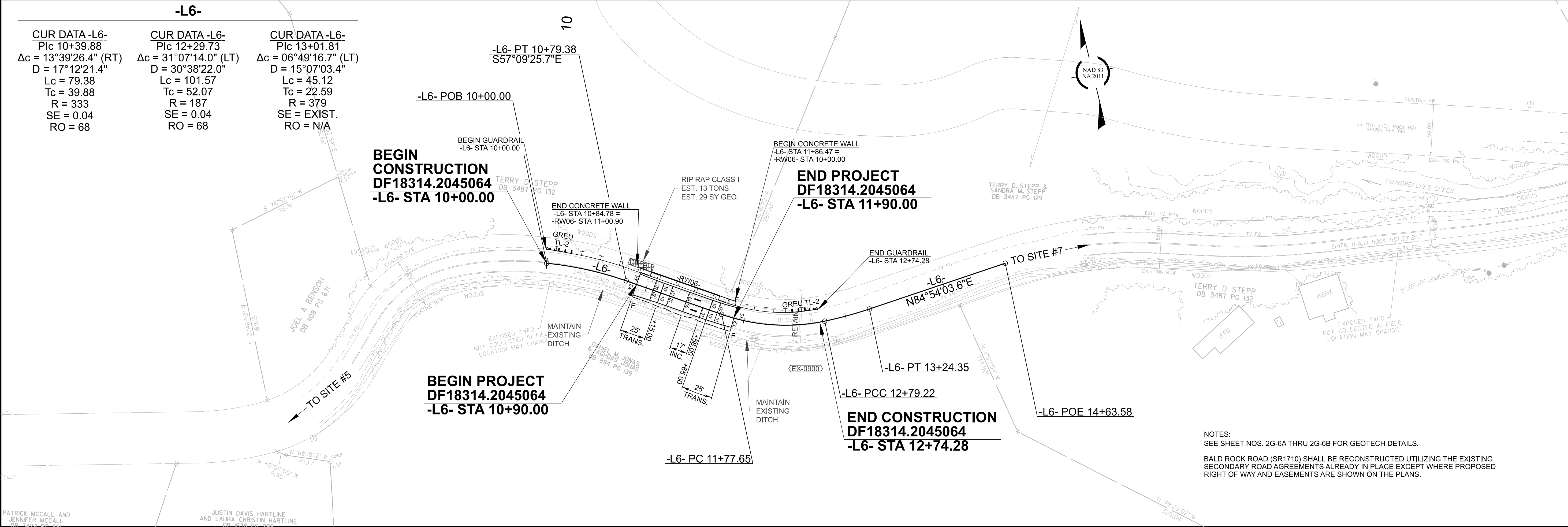


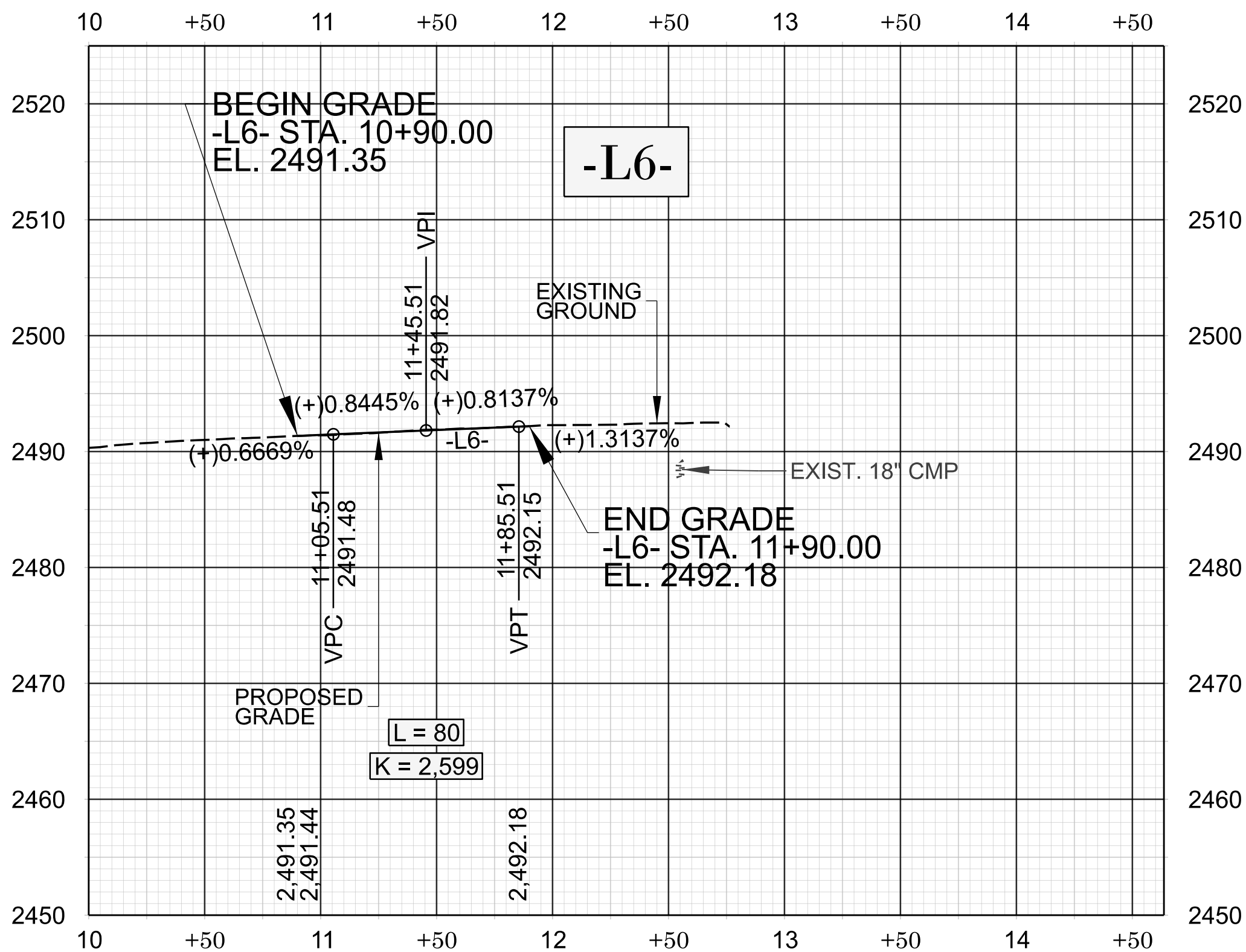
11/14/23



PATRICK MCCALL AND
JENNIFER MCCALL

JUSTIN DAVIS HARTLINE
AND LAURA CHRISTIN HARTLINE

18" CMP -L6- 12+55 PIPE HYDRAULIC DATA EX-0900		
DESIGN DISCHARGE	=	13 CFS
DESIGN FREQUENCY	=	25 YRS
DESIGN HW ELEVATION	=	2492.5 FT
BASE DISCHARGE	=	16 CFS
BASE FREQUENCY	=	100 YRS
BASE HW ELEVATION	=	2492.5 FT
OVERTOPPING DISCHARGE	=	11 CFS
OVERTOPPING FREQUENCY	=	10 +/- YRS
OVERTOPPING ELEVATION	=	2492.4 FT
*OT IS ROADWAY CREST.		



DF18314.
2045064

FINAL | 9

NORTH CAROLINA
DEPARTMENT OF TRANSPORTATION
HENDERSON COUNTY

HIGHWAY DIVISION 14

ROADWAY DESIGN
ENGINEER

8/26/2025

SEAL
039234

ENGINEER
MARK HONEYCUTT

Signed by:
Duke Honeycutt

DOCUMENT NOT CONSIDERED FINAL
UNLESS ALL SIGNATURES COMPLETED

HYDRAULICS
ENGINEER

8/26/2025

SEAL
049338

ENGINEER
ERIK P. AADLAND

Signed by:
Erik P. Aadland

15118888 PREPARED BY

KCA
KISINGER CAMPO
& ASSOCIATES
NC FIRM LICENSE No: C-1506
301 Fayetteville St.,
Suite 1500
Raleigh, NC 27601
(919)882-7839

REVISIONS